



SWEDISH UNIVERSITY
OF AGRICULTURAL
SCIENCES

SCIENCE AND EDUCATION FOR SUSTAINABLE LIFE

International student prospectus • 2021-2022

A WORLD-CLASS INTERNATIONAL UNIVERSITY

2020 QS World University Rankings

We are ranked 3rd best university in the world in the fields of agriculture and forestry.

Center for World University Ranking (CWUR)

Rank by subject 2019:

1. Forestry
5. Soil Science
7. Biodiversity
7. Veterinary Sciences

In the **Times Higher Education (THE) 2019** we are ranked the **36th** best young university of the world.





In figures

4,000 full-time students

530 doctoral students

1,600 teachers and researchers

200 professors

3,000 full-time equivalent staff

3 campuses

4 faculties:

- Forest Sciences
- Natural Resources and Agricultural Sciences
- Veterinary Medicine and Animal Science
- Landscape Architecture, Horticulture and Crop Production Science

Content

Dear prospective student	4
Sustainable development goals	6
Gender equality, by alumna Elin Olofsson	8
Critical thinking and academic excellence	10
Living in Sweden	12
Finding knowledge abroad, by Didier	16
Bachelor's programme	18
Master's programmes	20
A higher level of knowledge, by Sabrina	32
Freestanding courses & exchange studies	34
Fees and scholarships	35
Admission requirements	36
Visa and accommodation	37
Application guide	38
How to enrol	39
Our campuses	40
More than just a library	42
By students, for students	44
Chat with our students through Unibuddy	46
Environmental monitoring and assessment	48



DEAR PROSPECTIVE STUDENT,

This prospectus presents all the degree programmes offered at SLU. We hope that you will find SLU and our programmes interesting and exciting. Studying at SLU will give you a memorable student experience and a qualification that will make you a highly sought-after expert on the job market.

In many ways, being a student at SLU is different from studying at other universities. Because we have more teachers per student than most other universities, it will be easier for you to come in contact with research, the surrounding community and the business sector. SLU holds a high position on international ranking scales, where the quality management of our degree programmes has been given top marks. There are scholarships and grants which enable students to study abroad. In addition, most of our students find employment immediately after graduation since there is a high demand for skills and expertise in the land-based industries.

Graduates from SLU are needed in order for Sweden and the rest of the world to cope with the transition from a fossil-based to a bio-based society which is necessary for long-term sustainability. Nature, forests, farmlands, gardens, pasture lands and cities – these are the resources we have to produce climatesmart food, energy and bio-based materials to replace fossil-based products. At the same time, we must safeguard biological diversity and secure healthy living conditions for both humans and animals, while staying within the environmental, social and economic limits that our planet can tolerate.

This is precisely the focus of SLU's research and education. We tackle these challenges and look for practical solutions that will work in reality. We work on the development of sustainable urban and rural areas and strive to promote the quality of life and well-being of both humans and animals. We operate at local and global level to bring about a sustainable, thriving and better world.

Being a university student is not only about studying. Enjoying your free time is just as important. At some of our campuses, there are dog kennels, for instance, while others offer access to a vegetable patch. Some students are able to make a bit of money working for SLU's green innovation company. As an SLU student and student union member, you not only have the opportunity to participate and influence your degree programme; you will also be able to take part in a variety of fun activities, dinners and parties throughout the year. The student unions cater for practically all interests and students are more than welcome to start up new activities.

All in all, we promise you an exciting and enriching time as a student at SLU. We hope that you will join us in our efforts to bring about a more sustainable future and we look forward to seeing you on one of our campuses this autumn. Why not submit your application to one of our degree programmes today?

Mia Knutson Wedel, Vice-Chancellor, SLU

Marie Petersson, Chair of the Joint Committee of Students' Unions at SLU



1 NO POVERTY



2 ZERO HUNGER



3 GOOD HEALTH AND WELL-BEING



4 QUALITY EDUCATION



5 GENDER EQUALITY




6 CLEAN WATER AND SANITATION



7 AFFORDABLE AND CLEAN ENERGY



8 DECENT WORK AND ECONOMIC GROWTH



9 INDUSTRY, INNOVATION AND INFRASTRUCTURE



10 REDUCED INEQUALITIES



11 SUSTAINABLE CITIES AND COMMUNITIES



12 RESPONSIBLE CONSUMPTION AND PRODUCTION



13 CLIMATE ACTION



14 LIFE BELOW WATER



15 LIFE ON LAND



16 PEACE AND JUSTICE STRONG INSTITUTIONS



17 PARTNERSHIPS FOR THE GOALS



THE GLOBAL GOALS
For Sustainable Development

**“WE ARE
THE FIRST
GENERATION
THAT CAN
END POV-
ERTY AND
THE LAST
THAT CAN
END CLIMATE
CHANGE”**

Ban Ki-Moon,
former Secretary-
General of the UN

THE GLOBAL GOALS

FOR SUSTAINABLE DEVELOPMENT

SLU's knowledge is instrumental to Agenda 2030 and the UN sustainable development goals (SDGs).

Is your goal to work for sustainable bio-based development in the coming decades? Then studying at SLU is right for you! For sustainable food production, to replace plastic, concrete and fossil energy and for urban and rural development adapted to a changing climate.

The 17 cross-societal SDGs have been adopted by 193 countries. The goals are to be met by all countries by 2030.

In many evaluations, Sweden is reported as the country that has accomplished the most of this agenda. In an early progress report to the UN, the Swedish Government points at SLU for world-class research needed to realise the SDGs. SLU's research and teaching focus on 12 of the 17 goals and deal with development both in Sweden and globally. More than 20 per cent of publications at SLU are joint works with low- and middle-income countries.

As the former Secretary-General of the UN, Ban Ki-Moon, said: “We are the first generation that can end poverty and the last that can end climate change”.

EQUALITY FOR ALL

ELIN OLOFSSON FOUNDER OF #SLUTAVVERKAT

I'm Elin Olofsson - a woman, forester, SLU alumna and the founder of #slutavverkat. In 2018, I received the Alumnus of the Year award at SLU, which was fantastic! The award drew attention to the huge effort that I and everyone else behind #slutavverkat have put into changing a prevailing norm in the forest industry.

In the autumn of 2017, something happened that would change my future. It is a time that many of us will remember as a turning point in the work for the equal value of all. The Metoo movement hit the world with full force. A number of follow-up campaigns were launched in various business and industry sectors here in Sweden, but the forestry sector remained silent.

Those of us who had studied forestry at university and were working in forestry found this odd. This is a very male-dominated business, characterised by long-standing traditions that often collide heads on with the gender equality work that is taking place today. There were three of us who decided to launch #slutavverkat.

We opened an anonymous Instagram account where we posted all the stories we received. 16 students on the Forest Science programme had started talking, and they were wondering why issues relating to gender equality and the equal value of all were rarely touched upon in teaching or within the sector. They decided to write an open letter, which led to SLU today working actively with gender equality on its programmes.

The purpose of #slutavverkat was to change norms within the forestry sector. It is about making it possible for women to dare and be able to take up space, be themselves and be accepted for who they are in the same way as men. The fact that those behind #slutavverkat have received this award shows how important this issue is. There is a change happening, a change is needed, the will to change is there and together, we are strong enough to succeed. Today, the forestry sector is on the verge of a massive change when it comes to gender equality and equal opportunities, and that feels great!

/Elin

*Elin Olofsson received the 2018
Alumnus of the Year award for her
contribution to increased gender
equality awareness within the
forest sector and at SLU.*



CRITICAL THINKING AND ACADEMIC EXCELLENCE FOR A BETTER WORLD

The teaching style at SLU promotes critical thinking. As a student you are expected to question beliefs that are often taken for granted and we also expect you to question what you learn. Debating with classmates and lecturers is accepted and welcomed.

SLU's teaching staff crave academic excellence, and are focused on producing a highly employable student body. Communication skills, the ability to work in a team and solve problems, an awareness of the commercial landscape and work experience are just some of the qualities that make our graduates employable. To strengthen your ability to build a career in an increasingly competitive job market, as a student at SLU you are encouraged to learn through experience. You study real-life situations, take a hands-on approach to problem solving, and make valuable contact with the business sector.

Lectures, tutorials, laboratory work, field work, group projects and independent

study are just some of the teaching methods used here. Assessment procedures also vary depending on the course, and can include written assignments and examinations, individual and group projects, laboratory reports and oral presentations.

FOR A BRIGHTER FUTURE

Equality is an important component of the Swedish higher education system. We welcome students of all backgrounds, regardless of gender, religion, home country or socioeconomic background. We also believe in a lifelong opportunity for higher education. Hence, there is no upper age limit at Swedish universities.

Here at SLU we are committed to developing the internationalisation aspect of our syllabus, network and student experience. Global perspectives have been integrated into the design, development and presentation of all programmes and courses. We welcome students from all over the world and by offering students

the chance to make important international connections, we are increasing our students' global employability.

SLU has four interdisciplinary platforms that integrate different scientific fields: Future Animal Health and Welfare, Future Forests, Future Food and Urban Futures. These platforms are intended to be a living, interactive interface between academia and society, and aims to:

- identify needs for knowledge and generate scientifically based decision support for issues relevant to society;
- identify and develop new questions for research to support solutions to future challenges;
- develop interdisciplinary working methods by coordinating cooperation across disciplinary boundaries.

Using this approach to tackle complex scientific issues is something that makes the Future platforms unique.



Chuanxin Sun, Associate Professor in Molecular Cell Biology, has presented a rice variety that emits 90 per cent less methane.

LIVING IN SWEDEN

When most people think of Sweden, they think of little red cottages in open meadows. While this is a familiar sight, the Swedish landscape is very diverse. Sweden is the third largest country in Western Europe, and stretches 1,500 km from north to south. With an average of only 20 inhabitants per square kilometre, Sweden has plenty of space. Snow-covered mountains, sandy beaches, pristine lakes and dense green forests make for dramatic scenery. In fact, forests cover approximately 67 per cent of the land area in Sweden. Nature is close everywhere, even those who live in Sweden's largest cities are just a short boat ride away from thousands of picturesque islands that make up the Swedish archipelago. Sweden also has a rich and varied wildlife, which includes reindeers, bears, wolves and moose!

CLIMATE

The Swedish climate is seasonal and varies greatly between north and south.

Most people associate Sweden with winter. However, the climate is generally temperate due to the warm Gulf Stream. During the summer, Sweden becomes the land of the midnight sun. Autumn brings with it an array of colours, and in spring-time the countryside bursts into bloom. The winter months can be cold and dark. However, many Swedes have the attitude that "there is no such thing as bad weather, only the wrong clothes".

SOCIETY

Sweden is known for its social equity and economic success, and has one of the lowest levels of poverty in the world. The Swedes enjoy an advanced welfare system, a low ratio of unemployment and a strong economy. For Swedish citizens, education is free, healthcare is cheap, and childcare is available to everyone. While people pay high taxes to maintain the sophisticated social system, the Swedish standard of living and life expectancy are amongst the highest in the world.

LIFESTYLE

The Swedish lifestyle combines a love of nature, environmental awareness and culture. Deep-rooted traditions are mixed with tolerance and openness for other societies, as almost 20 per cent of the population was born outside of Sweden. Cultural celebrations such as Midsummer and Lucia are celebrated as enthusiastically today as in previous generations.

SWEDISH INNOVATION

With a government that invests heavily in research and development, Sweden has become one of the world's most innovative nations. The Celsius scale, cardiac pacemaker, seatbelt, zipper, tetra pac, wrench, artificial kidney, matches, dynamite, nicotine gum and ball bearings are just a few of the many popular Swedish inventions.

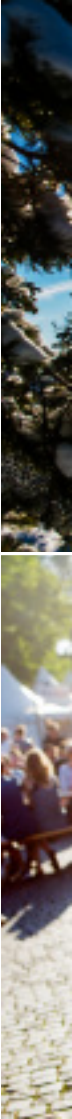


Photo: Ted Logart/imagebank.sweden.se



Photo: Nrqemi/iStock



Photo: Sanna Dolck



Photo: Stefan Berg



Photo: Melker Dahlstrand

Photo: Anna Hällams/Imagebank.sweden.se



Photo: Elin Bryngelsson/Imagebank.sweden.se



Photo: Henrik Trygg/Imagebank.sweden.se



SWEDEN IN FACTS AND FIGURES

Capital: Stockholm

Official language: Swedish

Population: 10 million

Area: 407,000 km²

Life expectancy: Men 81 years, women 85 years

Foreign-born inhabitants: 20 per cent

Religion: The Church of Sweden is Evangelical Lutheran. There are also many other religions and denominations.

Government: Constitutional monarchy, with parliamentary democracy

National day: 6 June

Currency: Swedish krona (SEK)

Traffic: Drive on the right-hand side

Education: Ten years compulsory schooling. Over 40 per cent go on to higher education.

Working hours: A standard working week is 40 hours. Minimum paid vacation is five weeks per year.

Calling code: +46

Further information: www.sweden.se



ENGLISH PROFICIENCY

Although Swedish is the official national language, Swedish people are in general very good at speaking English. In fact, Sweden is the second most English-proficient country in the world where English is not the official language, making it very easy for tourists and international students to get around. At SLU, almost all Master's programmes are taught in English. This enables students to study in Sweden, but learn in English!



***“I HAVE ALWAYS WANTED
TO STUDY ABROAD AND
EMBRACE OTHER
CULTURES”***

DIDIER

MASTER STUDENT IN RURAL
DEVELOPMENT AND NATURAL
RESOURCE MANAGEMENT

FINDING KNOWLEDGE ABROAD

I had read a lot about sustainability issues and thought Sweden was doing well at reaching the SDGs. I felt that if I studied in Sweden, I would become more knowledgeable on sustainability issues. Discussions around the world about the future are more and more connected to climate change and environmental protection. That is also why I like this programme – it combines rural development with natural resource management. In my country, the population growth is dense, which leads to a lot of pressure on natural resources.

I have a Bachelor's degree in agricultural economics and agribusiness from the National University of Rwanda. The Master's programme matches well with my previous educational background and my previous work experience; I worked in the agricultural sector where I had a lot of contact with farmers – when

I saw this programme, I was interested in applying. SLU arranged accommodation for us, sponsored by the Swedish Institute's international scholarship. I think it would have been hard to find accommodation on my own.

SLU has outstanding facilities! The classrooms are very modern. I like that there is so much nature all around the university; everything is green and the place is bike-friendly. The teachers are of a high calibre and have diverse expertise and knowledge, having done research all over the world. We learn a lot from their expertise. I like the way they value the students' suggestions. The classes are a very participative environment, and you can always share an idea, even if it challenges the teacher.

Another thing I like is how the teachers are connected with the research

that they have been doing in all parts of the world, and they give us all that knowledge. For every course we take, we are given a historical background of everything, depending on what you are studying. This helps us understand the causes and relations of a problem.

I have always wanted to study abroad and embrace other cultures, and in such an international class, I have experienced a multi-cultural study environment. Learning from the experiences of students from other countries helps me contribute to the development of my country while also allowing me to network. When I receive my Masters' degree, I hope to return to Rwanda and help the country stand by itself and reduce its development aid.

/Didier



BACHELOR'S PROGRAMME

APPLICATION DEADLINE: 15 JANUARY 2021

In 2021, SLU will start up its first international Bachelor's programme which focuses on the perspective of sustainability and it is now open for applications. As a Bachelor's student at SLU, you will be given world-class education in a unique learning environment at Campus Alnarp in southern Sweden. Welcome!

FOREST AND LANDSCAPE

Do you want to be able to influence the future development of forest and landscape? This new programme takes a holistic approach to the forest and its importance to society, through a combination of different perspectives on the environment and economy, management and care, urban and rural areas.

The programme will give you sustainable knowledge about forests and landscapes. You will also take courses on urban forests, communication and social ecology, as well as basic courses in forest science which investigate the conditions and potential of forests and how they are managed.

The programme is provided at SLU's campus in Alnarp, 10 kilometres from Malmö. Tuition is in English and the programme has an international perspective. There are also opportunities to study abroad.

Graduates will be able to work as a specialist or advisor at a government authority, municipality, forestry company or in nature tourism. You can also continue your studies on one of our Master's programmes.

MASTER'S PROGRAMMES

APPLICATION DEADLINE: 15 JANUARY 2021

The Master's programmes offered by SLU are unique and based on our strength and profile areas; bio-based economy, environment, health and well-being. The combination of teaching and research provides students with countless opportunities for interesting, in-depth studies and specialisations.

SLU is one of Sweden's most research-intensive universities, and is responsible for almost one third of all biological research in Sweden. By attending SLU as a Master's student, you have the opportunity to broaden your academic achievements, deepen your knowledge of a particular subject, develop independent research skills, strengthen your employment prospects, increase your future market value, and prepare for further doctoral studies.

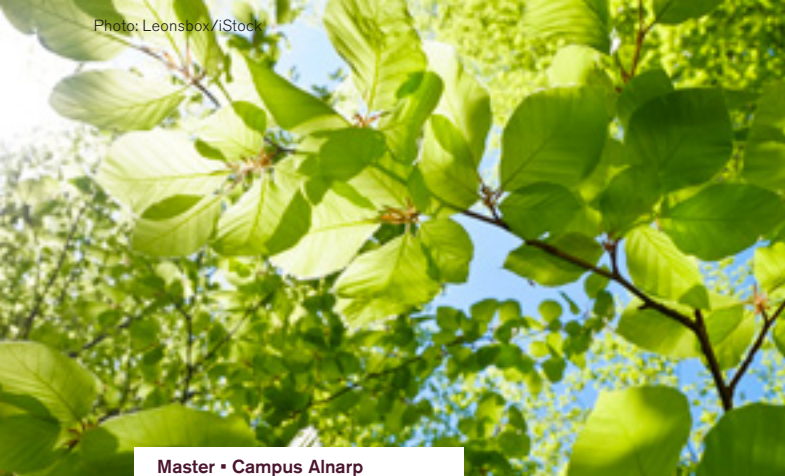
ERASMUS MUNDUS MASTER'S STUDIES

Erasmus Mundus is a cooperative mobility programme that aims to improve the quality of higher education in Europe, promote the European Union as an international centre for academic excellence, and stimulate intercultural under-

standing through cooperation with low-income countries. In collaboration with the European Commission and several other leading universities, SLU is able to offer students Erasmus Mundus Master's programmes.

COOPERATIVE MASTER'S

SLU also offers cooperative Master's programmes together with other Swedish and European universities, opening up a wide range of courses and scientific areas that complement SLU's own.



Master • Campus Alnarp

EUROFORESTER

Forests are of great importance for climate, society and economy – parameters that affect all countries. This programme will give you an international perspective on the sustainable development of forests. This programme has been designed for students who want to expand their knowledge by studying in-depth courses on forestry policy, biology, nature conservation and the management of urban forests.

It is a broad programme and you will learn about forests in Sweden and abroad, focusing on the Baltic Sea region and northern Europe. The programme includes a course on the management of deciduous forests which is a common forest type in large parts of Europe.

After graduation, you can work as a specialist or advisor at a government authority, municipality, forestry company or other company. You can also go on to doctoral studies.



Master • Campus Umeå

FOREST ECOLOGY AND SUSTAINABLE MANAGEMENT

Forests must be taken care of and developed, which requires a combination of knowledge of conservation ecology and forest management. This is precisely the content of this programme. Tuition is carried out in close cooperation with research in ecology and forest management. The courses focus on the northern coniferous forest belt. You will learn about ecological principles and how to problematise and understand the complexity of issues such as global change and the many diverse roles of the forest. This programme is aimed at students who want to develop their knowledge of forest science, environmental science, biology and ecology.

After graduation, you can work as a specialist or advisor at a government authority, municipality, forestry company or other company. You can also go on to doctoral studies.

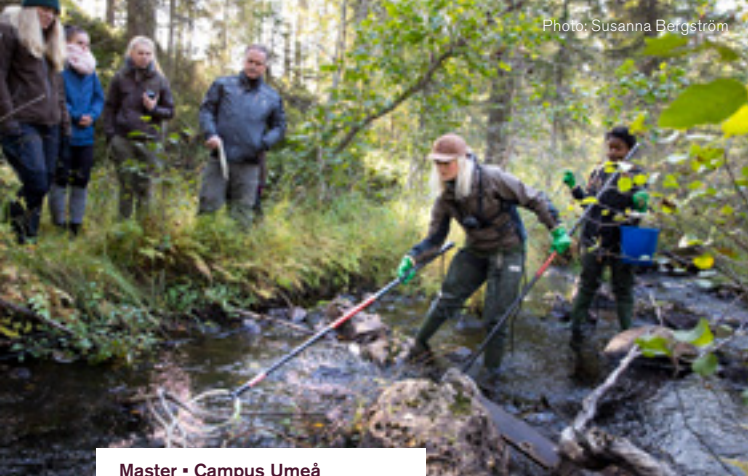


Photo: Susanna Bergström



Photo: Salmonfox

Master • Campus Umeå

MANAGEMENT OF FISH AND WILDLIFE POPULATIONS

Do you want to contribute to a sustainable future? Welcome to a unique programme that investigates interaction between fish, wildlife and humans. To be able to preserve biodiversity, we need more knowledge about ecology and ways of conducting animal inventories. We also need ways of predicting the development of animal stocks to secure sustainable management, and methods for the preservation of endangered species. Knowledge about social dimensions is needed to resolve conflicts which can arise when different interests collide.

Tuition is given by world-leading researchers, some of whom are based in Sweden and others abroad. Many of the students on this programme come from abroad.

After graduation, you will have specialist knowledge that will make you an attractive employee in the animal and nature management sector. You will also be well-prepared for a career in research.

The programme is provided as a form of collaboration among a number of campuses. The courses in Umeå focus on forest biotechnology.

Master • Campus Umeå

PLANT BIOLOGY FOR SUSTAINABLE PRODUCTION

How can the cultivation of plants be adapted to new climate conditions? How do we best protect plants from disease and how can plant breeding contribute to good quality, high yield and sustainability? These are some of the perspectives of this international Master's programme.

The courses are held by internationally renowned experts and focus on plant-based solutions for the development of agriculture and forestry.

This programme is also available in the form of collaboration with Stockholm University and Uppsala University, and as an Erasmus Mundus programme with international collaboration partners.

Many students choose to go on to doctoral studies after graduation, while others find jobs at, for example, plant breeding companies.



Master • Campus Uppsala

AGRICULTURAL ECONOMICS AND MANAGEMENT

Do you want to be a business administrator or economist specialising in agriculture and green value chains? Or an agronomist specialising in economics? Welcome to a highly topical Master's programme with an international perspective!

You will gain a solid grounding in business administration or economics and learn how your knowledge can be applied to agriculture and the green sector's value chains and used to analyse a range of policy instruments. The programme includes a course in leadership which will prepare graduates for influential managerial positions at an organisation or company.

The programme leads to a Master's degree in either business administration or economics.

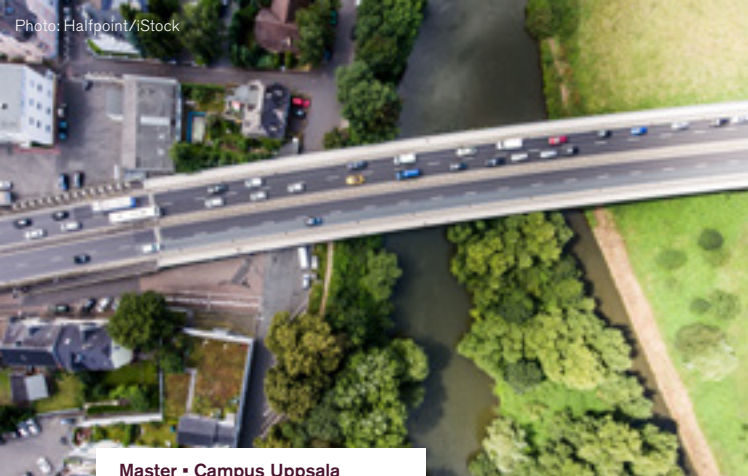


2 x Degree • Campus Uppsala

AGRICULTURAL, FOOD AND ENVIRONMENTAL POLICY ANALYSIS

Long-term and effective solutions for agriculture, food and the environment are urgently needed at regional, national and global level. AFEPA is a European Erasmus Mundus programme in economics with a focus on policy analysis. The programme is provided as a collaboration between SLU and universities in Italy, Germany and Belgium. You will undertake your studies at two of the partner universities and gain a degree from both universities. During the programme, students and representatives from all four universities meet in conjunction at the two summer courses, where you will also be given feedback on your Master's thesis from teachers from all the universities.

You will have the whole world as a potential labour market, working for international organisations, authorities or in the private sector. Application is made through the consortium for the programme. The programme leads to a Master's degree in economics.



Master • Campus Uppsala

ENVEURO

The focus of the EnvEuro programme is the environment and Europe. The programme is run through collaboration between four universities: SLU, University of Copenhagen, Hohenheim in Stuttgart and BOKU in Vienna.

The focus subjects are the environment and the sustainable use of natural resources, studied with international perspectives based on planning, management, research, etc.

There are six different specialisations to choose from. SLU has Water Resources, Land Resources and Land Use, and Environmental Management. You can supplement your studies with Environmental Impact, Ecosystems and Biodiversity, and Climate Change at one of the other universities.

You will do your first year at one university and then your second year at one of the others and you will gain a Master's degree from both of those universities. This programme attracts students from all over the world and you will build up a large network of contacts for the future.



Master • Campus Uppsala

ENVIRONMENTAL COMMUNICATION AND MANAGEMENT

The management of environmental and sustainability issues requires communication and cooperation among many different actors in society, where challenges are examined from different perspectives. What sort of future is desirable and what sort of future is possible?

The programme will give you tools to manage the social processes that facilitate or impede the management of environmental and sustainability problems. You will learn how to facilitate dialogue and handle conflicts between different parties and interests. Writing is as an important component of the programme.

A particularly strong feature of this programme is its diversity perspective. Students come from many countries and a variety of educational backgrounds such as natural science, social science and technology.



Master • Campus Uppsala

ENVIRONMENTAL ECONOMICS AND MANAGEMENT

Welcome to an international programme for those who are interested in economic issues with a focus on the environment, natural resources management and sustainable development.

The topics covered in this programme include biological resources, value chains and various policy instruments. You will specialise in either business administration or economics. The business administration specialisation consists of courses in corporate responsibility, green leadership and environmental accounting. The economics specialisation consists of courses in economic growth, econometrics and courses applied to environmental and natural resources management.

Depending on the specialisation, the programme leads to a Master's degree in business administration or economics. The programme provides excellent opportunities for doctoral studies or for environmental work at a company, organisation or authority.



Master • Campus Uppsala

LANDSCAPE ARCHITECTURE FOR SUSTAINABLE URBANISATION

Coordination is a key word in the field of sustainability, and this programme brings together students from different countries and backgrounds, such as architects, landscape architects and urban planners. The central focus of the programme is on water and green structure. These topics are covered at both an overarching and detailed level and from different perspectives such as social and ecological.

The programme alternates between theory and project work so students will be able to incorporate sustainable urban design into theoretical and practical aspects of landscape architecture. The courses will enable students to develop both their creative ability to draw and communicate through images, and their theoretical knowledge of the role of landscape architecture in sustainable urban design.



Master • Campus Uppsala

RURAL DEVELOPMENT AND NATURAL RESOURCE MANAGEMENT

Rural development and natural resource issues are highly relevant topics, not least due to climate change and demographic trends. This Master's programme investigates these subjects in the context of societal development and offers opportunities for both broadened and in-depth studies. You will gain a deeper insight into development issues and a social science perspective on natural resources and globalisation.

The driving forces for societal development are addressed, with a focus on rural areas. Great emphasis is placed on academic writing. Your knowledge will be in demand among international organisations, authorities, ministries, in aid and research. The programme leads to a Master's degree in rural development.



Master • Campus Uppsala

SOIL, WATER AND ENVIRONMENT

Land and water use have been important and fundamental factors for the survival of humans for thousands of years. Nowadays, because of climate and demographic trends, they are more important than ever – both locally and globally.

The programme has a natural science orientation. You will gain knowledge about the sustainable use of land and water and how they are linked together. The programme also focuses on the efficient use of natural resources and nutrients, as well as on planning and decision-making.

Depending on which courses you choose to study, you will gain a Master's degree in soil science (the only one in Sweden) or in environmental science. After graduation, you will be able to work with soil and water issues as an expert, analyst or advisor for an organisation, consultancy company, county administrative board or some other authority.



Master • Campus Uppsala

SUSTAINABLE DEVELOPMENT

What methods can we use to bring about more interdisciplinary solutions to the world's sustainability problems? The Sustainable Development programme is one route to finding answers.

The programme attracts social scientists and natural scientists, civil engineers, lawyers, biologists and many others from more than twenty countries, all of whom are highly committed to sustainability issues.

The programme is organised in collaboration with Uppsala University. It is applicable, interdisciplinary, method-focused, and problem-oriented. You will gain knowledge about the interaction between ecological, social and economic factors and learn, in theory and practice, how to analyse complex problems to reach sustainable solutions.



Master • Campus Uppsala

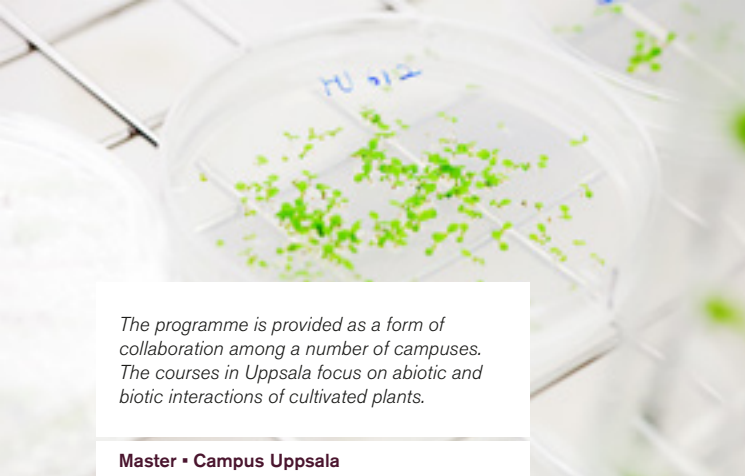
SUSTAINABLE FOOD SYSTEMS

A sustainable food system covers the entire chain from the raw produce through the production system, and on to consumption.

Sustainable Food Systems is an international, interdisciplinary programme with students from all over the world from a wide range of academic backgrounds such as science, agronomy, communication and gastronomy.

The programme includes a number of special courses on sustainable food systems: opportunities and challenges, marketing perspectives, project management for innovation, consumer behaviour and food waste. Students are able to choose elective courses on the basis of their academic background and qualifications and their future plans.

The programme leads to a Master's degree in food science and will provide graduates with skills that are needed by many public authorities, companies and organisations.



The programme is provided as a form of collaboration among a number of campuses. The courses in Uppsala focus on abiotic and biotic interactions of cultivated plants.

Master • Campus Uppsala

PLANT BIOLOGY FOR SUSTAINABLE PRODUCTION

How can the cultivation of plants be adapted to new climate conditions? How do we best protect plants from disease and how can plant breeding contribute to good quality, high yield and sustainability? These are some of the perspectives of this international Master's programme.

The courses are held by internationally renowned experts and focus on plant-based solutions for the development of agriculture and forestry.

This programme is also available in the form of collaboration with Stockholm University and Uppsala University, and an Erasmus Mundus programme with international collaboration partners.

Many students choose to go on to doctoral studies after graduation, while others find jobs at, for example, plant breeding companies.



Photo: Mårten Svensson

Master • Campus Alnarp

OUTDOOR ENVIRONMENTS FOR HEALTH AND WELL-BEING

This international programme is based on the relationship between humans and the environment. It investigates how outdoor environments can be designed and used as a way of promoting health and well-being.

You will study how different locations work for different groups of people, and how humans perceive, use and are affected by a physical environment. For example, how can we plan outdoor environments that activate children, young people and the elderly and in which they feel comfortable and safe?

Environmental psychology and landscape architecture are the starting points of this programme which provides essential knowledge for urban planning and useful tools for the design of outdoor environments for healthcare services, schools, housing and public environments.

The programme is a semi-distance course which leads to a Master's degree in environmental psychology.



Master • Campus Alnarp

AGROECOLOGY

Agroecology is the study of the ecology of food production systems. This international programme takes a holistic approach to the sustainability challenges of food production, how it is produced, processed and consumed.

The emphasis is on the role of agriculture but the programme also covers the complexity of this field and explores interdisciplinary solutions and interaction with a range of disciplines and areas of expertise.

The programme leads to a Master's degree in agricultural science. Many people choose to do research after completing the programme, or exert influence through a non-profit organisation, an expert authority or a company in urban plant production, indoor cultivation or new sustainable ways of producing food.



Master • Campus Alnarp

LANDSCAPE ARCHITECTURE

Are you interested in helping to shape the places where we live in a way that is sustainable for both humans and the environment? Landscape architecture can be studied from many different perspectives. This programme brings together horticultural architects, landscape engineers and urban planners from all over the world who will deepen their knowledge of landscape architecture on the basis of their own specialist skills.

The focus of the programme is the planning, shaping and management of both small-scale and large-scale areas of landscape, ranging from local parks to entire regions. Depending on the desired focus of their studies, students will be able to choose courses from the fields of social sustainability, ecosystem services, cultural history and process knowledge.

For some of the courses, applicants who do not already have the required skills can be admitted on the basis of portfolio work. The programme leads to a Master's degree in landscape architecture.



Master • Campus Alnarp



Photo: Josef Kubes/iStock

Master • Campus Alnarp

FOOD AND LANDSCAPE

Future sustainable perspectives on food are based on a better understanding of the relationship between consumer and producer, cities and rural areas, where food comes from and how it is a part of our culture.

How is land exploited in rural areas and how is it used in towns and cities? Are there any new routes for communication between producers and consumers? How is food used and presented at different stages in the process?

This international programme will give you knowledge of the entire chain in close contact with different stakeholders, as well as tools for strategic planning, communication and advocacy for sustainable development. The programme is interdisciplinary and appropriate for students from many different domains, such as society, nature, technology, food, landscape, cultivation and agronomy.

HORTICULTURAL SCIENCE

Horticultural Science is an international programme for people who are interested in plants. This programme will give you knowledge about fruit, vegetable and berry production chains, and plants for indoor and outdoor environments. Topics covered include cultivation technology, microbiology, plant breeding, economics and product quality.

The programme is interdisciplinary and you will be able to specialise in either social science or natural science by choosing appropriate elective courses.

The programme leads to a Master's degree in horticultural science. If you have previously completed the Bachelor's programme in Horticultural Engineering, you will be able to acquire the qualification of horticulturalist.

Some examples of places where graduates will be able to work are government agencies, consultancy businesses, or companies in trade and logistics.



The programme is provided as a form of collaboration among a number of campuses. The courses in Alnarp focus on plant protection and breeding for mitigating climate change.

Master • Campus Alnarp

PLANT BIOLOGY FOR SUSTAINABLE PRODUCTION

How can the cultivation of plants be adapted to new climate conditions? How do we best protect plants from disease and how can plant breeding contribute to good quality, high yield and sustainability? These are some of the perspectives of this international Master's programme.

The courses are held by internationally renowned experts and focus on plant-based solutions for the development of agriculture and forestry.

This programme is also available in the form of collaboration with Stockholm University and Uppsala University, and an Erasmus Mundus programme with international collaboration partners.

Many students choose to go on to doctoral studies after graduation, while others find jobs at, for example, plant breeding companies.



Master • Campus Uppsala

ANIMAL SCIENCE

Animal Science is a Master's programme that attracts both Swedish and international students who are interested in animal science with a focus on domestic animals.

The programme is closely linked to research and society, and students can construct their own degree programme by specialising in one of the programme's main areas: ethology/animal welfare/animal protection, genetics/breeding or nutrition/feeding.

The programme leads to a Master's degree in animal science, and good opportunities for jobs in research and development at a government authority, public agency or private company. A Master's degree also enables students to go on to doctoral studies.

***“I REALLY FELT LIKE A
FULL MEMBER OF THE
DEPARTMENT EVEN
THOUGH I WAS JUST
A STUDENT”***

SABRINA
DOCTORAL STUDENT



A HIGHER LEVEL OF KNOWLEDGE

As a doctoral student at SLU in Umeå, I am working within a project called *Governance – Human responses to multi-species management*. My part in the project is to look at the governance of wildlife here in Sweden and how wildlife, especially moose, interact with society and nature. I conduct surveys with landowners and hunters to understand how they perceive the management system today. The data we collect will hopefully give us valuable results to improve the system in the future.

I started writing my doctoral thesis one and a half years ago, but I first came to SLU long before that, around three years ago. It all started with an internship to collect data for my Master's dissertation. Then I was hired as a research assistant and teaching assistant and finally I got employed as a doctoral student. Since I have always been a person who's fond of nature and wildlife,

I had this dream picture of Sweden: endless nature, wildlife and red cottages here and there. When I started to plan my Master's dissertation, I applied for an Erasmus scholarship to come to Sweden and got it!

When I first arrived in Umeå, I was amazed by how much land the forests covered here compared to Germany – from the airplane, everything looked so green! There are many international students in Umeå and it was easy to get to know and talk to people. Everyone was very welcoming and I really like the open-door mentality here at SLU. It's not like in other countries, where there is a huge gap in the hierarchy between teachers and students. I really felt like a full member of the department even though I was just a student. I think that is one of the main reasons why I stayed – that, and the good conditions. As a doctoral student, I will receive a salary for four

years while I write my thesis. It is a luxury compared to many other countries.

In the future, when I'm done with my PhD, I would like to stay in Sweden; maybe do a postdoc at another Swedish university and then come back to SLU and Umeå. I really like the fact that I can be in nature as much as I want. I enjoy the different seasons up here in the north and love them all, and seeing the northern lights during a cold winter night is something you will never forget.

My advice, if you are thinking about applying to study at SLU is to do it, give it a try! It is a very friendly atmosphere and I enjoy it every day. There is a lot of freedom to do your own research and SLU has very useful connections with other universities. I don't regret my decision for a moment!

/Sabrina

FREESTANDING COURSES & EXCHANGE STUDIES

FREESTANDING COURSES

If you are interested in studying, but do not wish to commit to an entire programme, you have the option of applying for freestanding courses. Enrolling in a freestanding course will allow you more flexibility in your studies. You can pursue your professional or personal interests and see whether university studies suit your particular needs before committing to pursuing a degree.

It may also allow you to study at more than one university simultaneously. In some cases, credits from freestanding courses can be combined towards a degree as well. At SLU, you can find some freestanding courses at Bachelor's level and several more at Master's level within most of the university's subject areas.



EXCHANGE STUDIES

SLU runs a large number of exchange programmes in cooperation with many leading universities around the world and receives around 400 exchange students each year. By attending SLU as part of an exchange programme, you can combine your studies with an incredible cultural experience.

SLU's exchange programmes also enable international students to complete one or two semesters of study in Sweden while simultaneously gaining credits towards their degree. Your time abroad will also allow you to grow as a person, experience a different educational and cultural environment and increase your global employability.

As an exchange student at SLU, you can choose from a wide variety of interesting and innovative courses that will complement your studies within subjects such as landscape architecture, sustainable development, natural resources, agriculture, food and animal science.

APPLICATION DEADLINE: FOR MORE INFORMATION SEE WWW.SLU.SE/EN

FEES AND SCHOLARSHIPS

Students who are citizens of a country outside the EU, EEA and Switzerland are required to pay application and tuition fees. There are no application or tuition fees for students who are citizens of a country within the EU/EEA or Switzerland. Application and tuition fees do not apply to exchange students or doctoral students, regardless of their citizenship.

APPLICATION FEE

International students apply for SLU's programmes and courses through the website www.universityadmissions.se. You can apply for up to eight Bachelor's programmes, or four Master's programmes, in one application. For students who are required to pay an application fee, the cost is SEK 900.

TUITION FEE

Tuition fees for non-EU, non-EEA and non-Switzerland students vary depending on the programme and course. At SLU, the majority of programmes cost between SEK 85,000 and 260,000 per academic year. Information regarding tuition fee amounts, including the mandatory amount of the first instalment and for the entire course or programme, can be found on the SLU website: www.slu.se/en/education

SCHOLARSHIPS

Scholarships are only available for fee-paying students admitted to Master's programmes. The scholarships given by SLU cover tuition fees only (not living cost). The number of scholarships awarded can change from year to year. International students in Sweden can also apply for scholarships through the Swedish Institute, which offers over 500 scholarships every year to students and researchers from all over the world. Students can find a comprehensive list of all available scholarships on the website: www.studyinsweden.se

EXPENSES GUIDE

International students will require approximately SEK 8,000 per month to cover accommodation and other general expenses. Please note that the cost of living can vary greatly depending on the type of accommodation and lifestyle of the student.

Read more at: www.slu.se/fees-and-scholarships

Or: www.studyinsweden.se



ADMISSION REQUIREMENTS

FOR BACHELOR'S & MASTER'S STUDIES

Each programme and course has specific entry requirements that you must fulfil. Find out more at www.slu.se/education. For admission to Master's programmes and courses, you must have been awarded a Bachelor's degree from an internationally recognised university. In order to be eligible for studies at SLU, you must demonstrate that you meet the English requirements. You can demonstrate this through previous upper secondary (high school) studies, previous university studies, or an internationally recognised English test e.g TOEFL or IELTS..

Find more information at: www.universityadmissions.se

FOR EXCHANGE STUDIES

If you are interested in attending SLU as an exchange student, you are first advised to contact the International Office at your home university. To be admitted as an exchange student, your home university must have a current exchange agreement with SLU. You must also meet the prerequisites of the courses you plan to enrol in at SLU, plus our English language requirements.

FOR DOCTORAL STUDIES

To be eligible for doctoral studies, applicants must have completed a Master's degree, or have completed courses equivalent to 240 higher education credits (HEC), including 60 HEC at Master's level. In order to be eligible for doctoral studies at SLU, you must also demonstrate that you meet the English requirements. You can demonstrate that you meet the English language requirement through previous upper secondary (high school) studies, previous university studies, or an internationally recognised English test e.g TOEFL or IELTS.

A written application, curriculum vitae, academic transcripts, one copy of the applicant's Master's thesis and at least two references will also be required.

Read more at: www.slu.se/phd

Contact SLU's study counsellors for more information:
studyguidance@slu.se



VISA & ACCOMMODATION

DO I NEED A VISA OR NOT?

If you are a citizen of a country outside the European Union (EU), European Economic Area (EEA) and Switzerland, you must apply for a visa to study in Sweden.

This includes both exchange students and fee-paying students. Visas are organised through the Swedish Migration Agency, Migrationsverket.

If you are a citizen of an EU or EEA country, or Switzerland, you do not need to apply for a visa to study in Sweden. If you are a citizen of an EU or EEA country or Switzerland and are planning to live in Sweden for one year or more, you are generally required to be registered in the Swedish Population Register. This does not apply to Nordic citizens. Residence permits are also organised through Migrationsverket.

Read more at: www.migrationsverket.se

ACCOMMODATION GUARANTEE FOR EXCHANGE AND FEE-PAYING STUDENTS

As part of the exchange agreement, SLU will organise accommodation for exchange students. SLU will also guarantee all fee-paying Master's students accommodation for the first year of their stay. These students will be provided with a fully furnished dormitory room, which can be located on campus or in the surrounding area.

When living in a student dormitory you become part of a close-knit community and experience student life to the full. For guaranteed accommodation, make sure you apply in time.

All other students, including non-fee-paying Master's students, are responsible for organising their own accommodation. There are many accommodation options for students, including student dormitory rooms, flats, and shared houses. The earlier you start looking for accommodation, the better your options. Students are strongly encouraged to register themselves on the waiting lists for different types of accommodation

Read more at: www.slu.se/en/campus



APPLICATION GUIDE

FOR BACHELOR'S & MASTER'S STUDIES

You apply to all programmes and courses through the website www.universityadmissions.se, which is a national online application system.

Please read the information about documenting your eligibility thoroughly, as the specific documents that you must submit, and how to submit these documents, can vary depending on country and the level of study you are applying for.

You have to provide documentation in support of your application, which includes academic transcripts and English test results. If you do not submit all the required documents, or if you do not submit the documents correctly, it can greatly delay the processing of your application.

Read more at: www.universityadmissions.se

FOR EXCHANGE STUDIES

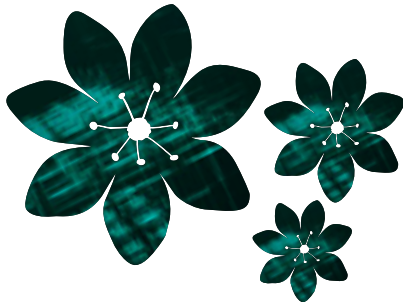
To apply to SLU's exchange programme, you must be nominated by your home university's International Office. You complete your application via the online national application system; [universityadmissions.se](http://www.universityadmissions.se). SLU will notify you by email when your application has been received. An admissions letter will be sent to you upon acceptance.

Read more at: www.slu.se/exchange-studies

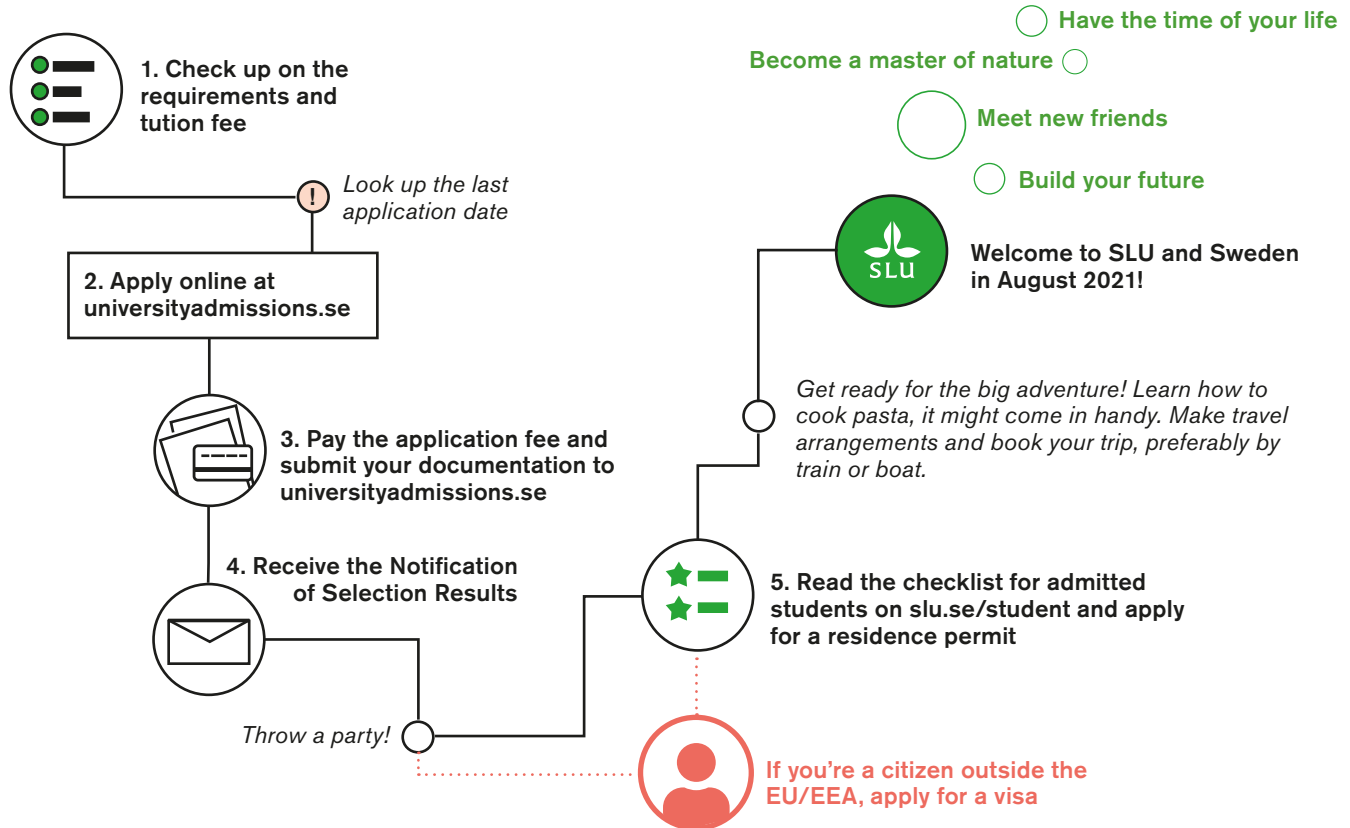
FOR DOCTORAL STUDIES

We advertise all available doctoral positions on our website. You can find specific application instructions for each position under Jobs and vacancies at SLU:

www.slu.se/en/about-slu/work-at-slu/jobs-vacancies/



HOW TO ENROL



OUR CAMPUSES

SLU has facilities and activities in many parts of Sweden and can therefore rightly call itself Sweden's longest university. Alnarp, Umeå and Uppsala are the main locations for our international degree programmes but we conduct education, research, experimentation and environmental monitoring and assessments in several other places in Sweden.



Photo: Mårten Svensson



1 CAMPUS ALNARP

Campus Alnarp is located in a large park surrounded by agricultural fields close to the sea between Malmö and Lund in southern Sweden. There is so much for students to explore here. Apart from all the activities on campus, you will also have access to the cities of Malmö, Lund and Copenhagen. Campus Alnarp's degree programmes focus on landscaping, horticulture, and agriculture and silviculture in southern Sweden. The campus has computer rooms, a restaurant, café, landscaping and horticultural laboratories, and a library with thousands of digital journals, databases and three kilometres of printed materials.

The students' unions organise many activities, ranging from weekly coffee-drinking get-togethers to comedy sketches and proms.



2 CAMPUS UMEÅ

Campus Umeå is located in northern Sweden and is an area shared by SLU and Umeå University. Most of the Faculty of Forest Sciences where research is conducted is located here. The campus environment in Umeå is a mix of advanced research, adapted degree programmes, different nationalities, lively student associations and is a dynamic hub for the whole of northern Sweden. The campus also has the largest sports facility in the Nordic region. Here, you can count on plenty of snow in winter and there are many opportunities to go skiing and do other outdoor activities. Umeå is also known for its wide range of entertainment and cultural activities with cafés, restaurants, theatres and music venues.



3 CAMPUS UPPSALA

SLU's largest campus area, Ultuna, is located in the student city of Uppsala, which is Sweden's fourth largest city. Most of the Faculty of Natural Resources and Agricultural Sciences is located here, as well as the Faculty of Veterinary Medicine and Animal Science. For those who want to have fun or get involved in student activities, there are two student unions on campus. They organise parties, coffee get-togethers ("fika" in Swedish) and have many different associations and committees for students to get involved in. If you fancy a change of scene, you can go to events organised by the "student nations", societies which are an important part of student life in Uppsala. Campus Uppsala has many green areas which are perfect for outdoor activities. There are football pitches, beach volleyball courts, a frisbee golf course, many tracks for jogging, walking and cycling and a sports facility with a gym and scheduled group sessions.

MORE THAN JUST A LIBRARY

At the SLU Library, you can borrow textbooks and other subject-related literature and access large amounts of digital materials including audiobooks for those with reading and writing difficulties. There are also librarians and language tutors who can support you in your university studies.

In the library, there are both individual desks and places where groups of students can study, as well as areas for relaxation, socialising and other activities. For example, as an international student, you can go to the "Bibliocafé" where you can meet other students and learn more about the Swedish language and culture.

www.slu.se/library

Photo: Linda Vidlund





LIBRARY IN UPPSALA

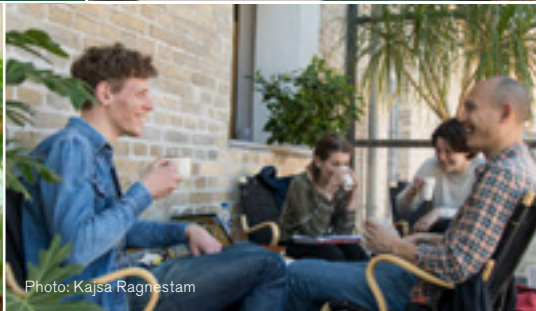


Photo: Kajsa Ragnestam



LIBRARY IN UMEÅ



LIBRARY IN ALNARP

Photo: Olof Dannberg

BY STUDENTS, FOR STUDENTS

There are a total of seven students' unions at SLU's different campuses. Which one you belong to depends on what you are studying. The unions are founded by students, are run by students and are there for the students.

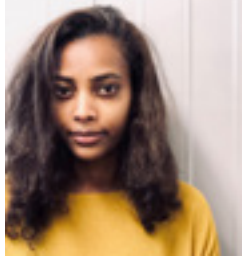
In addition to influencing and improving education, monitoring students' rights, arranging lectures and other events, the unions make sure that you and other students can enjoy a rich free time. The unions have a number of associations and committees. Amateur comedy theatre, "fika" evenings, sports associations, hunting clubs, environmental committees, dinners and choirs are only some of the activities on offer. Nothing is impossible, the members decide what activities their union should engage in.

The SLU campuses are located in university towns with a vibrant student life, not least at the "nationer", student clubs that arrange a number of activities. You can go clubbing, see friends, take in a concert, enjoy a Swedish "fika" or join one of the many associations – there are Pride associations, theatre groups, choirs and sports associations to mention a few. Here, you will make new friends and really get to know Swedish student life.

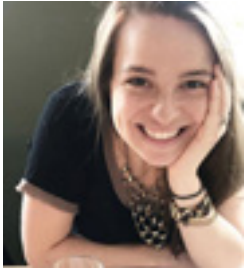








CHAT WITH OUR STUDENTS THROUGH UNIBUDDY



Find out more from one of our current students through our online chat and messaging system, Unibuddy. Our online ambassadors are current students from a range of courses across the university.

If you have more of a general question about student life and living in Sweden, all of our student ambassadors are happy to help.

You'll find more about Unibuddy on the website:

www.slu.se/unibuddy



MORE ABOUT STUDENT LIFE ON SOCIAL MEDIA

[#greenstudies](#)

[#mastersofnature](#)

[#studysustainably](#)





The new oceangoing research vessel, Svea, is especially adapted for research and environmental monitoring in the Baltic Sea, Kattegat and Skagerak. Svea's main activity is ecosystem investigation with a focus on recurrent monitoring of fish stocks and water quality. The vessel is also used for data collection for studies and understanding of climate change effects, mapping and monitoring of marine biodiversity and eutrophication.



A FOUNDATION FOR EXPERT KNOWLEDGE:

ENVIRONMENTAL MONITORING AND ASSESSMENT

The issues raised by SLU's environmental monitoring and assessment provide an excellent foundation for teaching activities. As an SLU graduate, you will gain an acute awareness of environmental matters and expert knowledge, enabling you to build a career in public administration, schools, the commerce industry, and in higher education.

slu.se/en/environment

STUDYGUIDANCE@SLU.SE

STUDY AND CAREER GUIDANCE

The study and career counsellors can act as your sounding board and be someone to talk to when thinking about your studies and your choice of career.

PHONE: +46 18 67 28 00

PHONE HOURS: Monday & Tuesday 10-12, Thursday 13-15 (CET)

EMAIL: studyguidance@slu.se

STUDY WITH DISABILITIES

Do you have a disability that affects your studies? Then you can apply for study support. SLU strives to offer all students equal opportunities and a good study environment. The study support coordinators can give you information about what support you can get, how to apply and how it works.

CONTACT: ability@slu.se

FURTHER INFORMATION

PHONE: +46 18 67 10 00

WEB: www.slu.se/en

***“I LOVE THE WAY SLU
FOCUSES ON SUSTAINABLE
DEVELOPMENT. IT IS SUCH
AN IMPORTANT ISSUE IN
SOCIETY NOWADAYS,
ALL OF ITS ASPECTS”***

SAGA
STUDENT AT SLU





SCIENCE AND EDUCATION **FOR** **SUSTAINABLE** **LIFE**

slu.se/en
slu.se/education
facebook.com/SwedishUniversityOfAgriculturalSciences
instagram.com/slu.sweden
instagram.com/slu.student
youtube.com/sluse



This printed matter is
carbon compensated
according to ClimateCalc.

Offsets purchased from:
South Pole Carbon

www.climatecalc.eu
Cert. no. CC-000001/DK

